

## 2016 Northland O'pen Cup

### SAILING INSTRUCTIONS

#### 1. RULES

Refer NoR 1. A flowchart summarising the O'pen BIC Addendum Q is over the page.

Flag H with two sound signals, indicates that boats are requested stay ashore until this signal is removed. The warning signal will be made not less than 30 minutes after flag H is removed (with 1 sound signal).

#### 2. FORMAT

2.1 **Gold and Silver Fleets.** The first race of the regatta will be an Invitation race. This race will not count towards the series score but is a chance for new O'pen BIC sailors to become familiar with the boat and see where they stand within the fleet. After the completion of this race all competitors will decide whether they want to sail in the gold fleet, or, the silver fleet. The gold fleet will be made up of the more experienced sailors that have raced before. The silver fleet will be made up of sailors new to racing who will have a similar, but shortened, course with coaching assistance throughout racing.

(a) Once a competitor's decision has been made to sail in either the gold or silver fleets they cannot change and shall continue in that fleet for the duration of the regatta, unless stated by both the Organising Authority and Race Committee.

2.2 **Adventure and Freestyle Combined Races.** These events may include but are not limited to, long distance adventure race and other various novelty races that may involve capsize starts, le mans starts and downwind slalom courses. These races may be combined with "freestyle" moves. The freestyle will be run by a sub-committee of parents and volunteers. More info will be provided on the day. THESE RACES DO NOT COUNT TOWARDS THE OVERALL POINT SCORE, but there will be spot prizes awarded courtesy of our sponsors. These races will also be made up of both the Gold and Silver Fleets Sailing together.

#### 3. COMMUNICATION

3.1 The official noticeboard will be located in the Kerikeri Cruising Club Clubrooms. Signals made ashore will be displayed from the flag pole at Kerikeri Cruising Club.

3.2 Changes to the Sailing Instructions ashore will be posted before 0900 on the day it will take effect, except that any change to the schedule of races will be posted by 1800 on the day before it will take effect

#### 4. SIGN-OUT AND SIGN-IN

4.1 Skippers are required to Sign On prior to leaving the beach before the first race. If there are a number of races being held in the one Sailing session the skipper is only expected to sign on once for that period on the water.

4.2 Skippers are required to Sign Off within 30 minutes of finishing if no further racing is being conducted.

4.3 Failure to sign on will result in a ten-point penalty for the next race completed. Failure to sign off will result in a ten-point penalty for the last race completed. Both penalty scores shall be awarded without hearing and shall not worsen a boat's score by more than the score for a DSQ.

4.4 The Sign-out and Sign-in systems will be located at the top of the boat ramp at Kerikeri Cruising Club.

#### 5. THE START

5.1 Races will be started using the following signals. This amends the table in RRS 26.

Minutes before starting signal	Visual Signal	Sound Signal	Means
3	Class Flag	One	Warning Signal
2	Preparatory flag	One	Preparatory signal
1	Preparatory flag removed	One long	One minute
0	Class Flag removed	One	Starting signal

5.2 The Class Flags will be:

Class	Flag
Gold	White flag with O'pen BIC insignia
Silver	Pink flag with O'pen BIC insignia

5.3 To alert boats that a race or sequence of races will begin soon, the orange starting line flag will be displayed with one sound at least five minutes before a warning signal is made.

## 6. TIME LIMIT

6.1 Boats failing to finish within 10 minutes after the first boat sails the course and finishes may be scored according to their recorded position at the last turning mark rounded. This changes RRS 35, A4, and A5.

## 7. MARKS

7.1 The starting line and finishing line will be between the signal mast of the Race Committee Signal Boat displaying an orange flag and the course side of a red spherical mark.

7.2 The Windward mark and Leeward Gate marks will be orange cylindrical inflatable marks.

7.3 Mark 1 will be a yellow cylindrical inflatable mark..

8. **SCHEDULE** Refer NoR 5 for the schedule of events.

9. **SCORING** Refer NoR 11

## 10. PRIZES

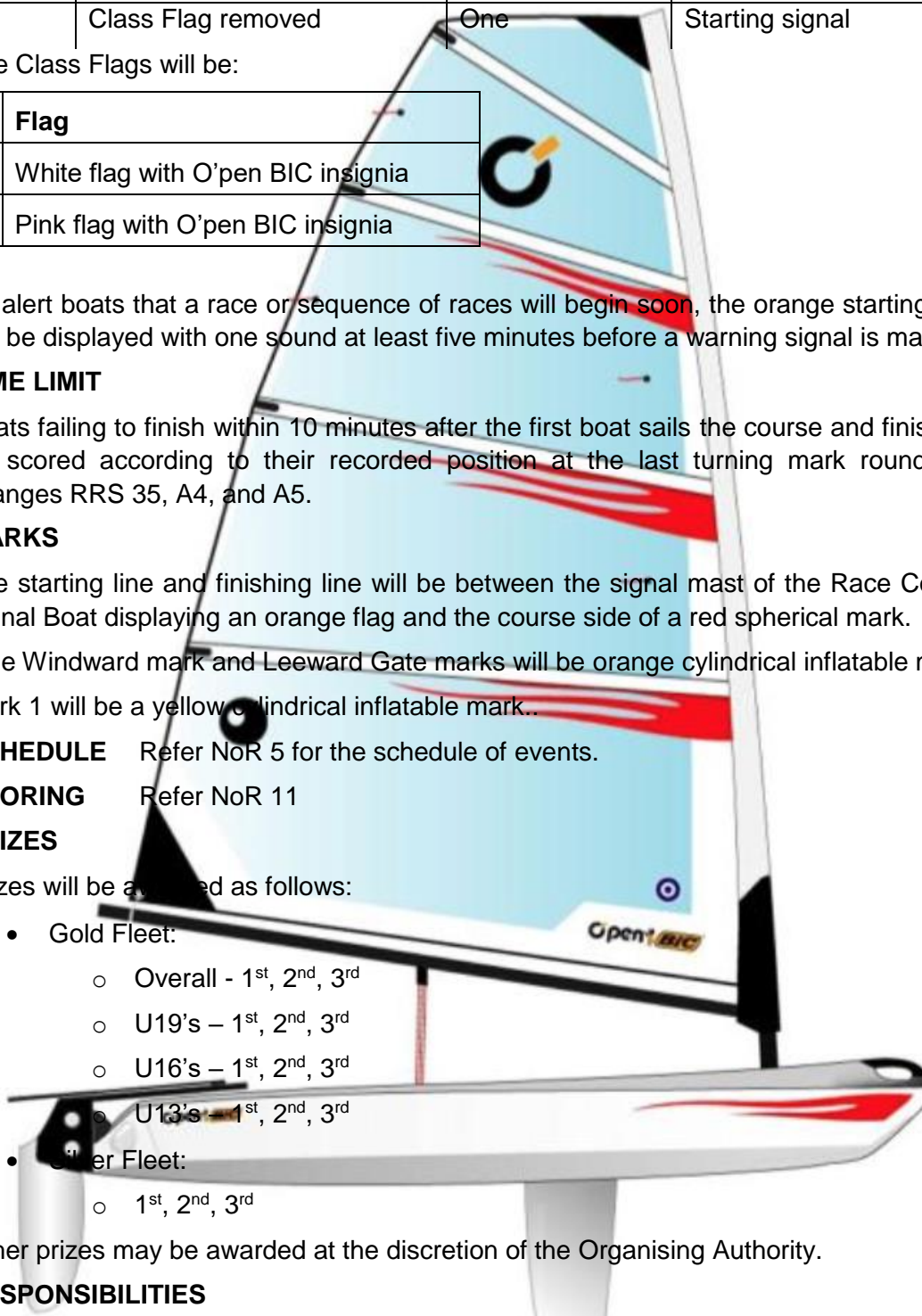
10.1 Prizes will be awarded as follows:

- Gold Fleet:
  - Overall - 1<sup>st</sup>, 2<sup>nd</sup>, 3<sup>rd</sup>
  - U19's – 1<sup>st</sup>, 2<sup>nd</sup>, 3<sup>rd</sup>
  - U16's – 1<sup>st</sup>, 2<sup>nd</sup>, 3<sup>rd</sup>
  - U13's – 1<sup>st</sup>, 2<sup>nd</sup>, 3<sup>rd</sup>
- Silver Fleet:
  - 1<sup>st</sup>, 2<sup>nd</sup>, 3<sup>rd</sup>

Other prizes may be awarded at the discretion of the Organising Authority.

## 11. RESPONSIBILITIES

11.1 All those taking part in the regatta do so at their own risk and responsibility. Specific attention is drawn to RRS 4, which states; "The responsibility for a boat's decision to participate in a race or to continue racing is hers alone".

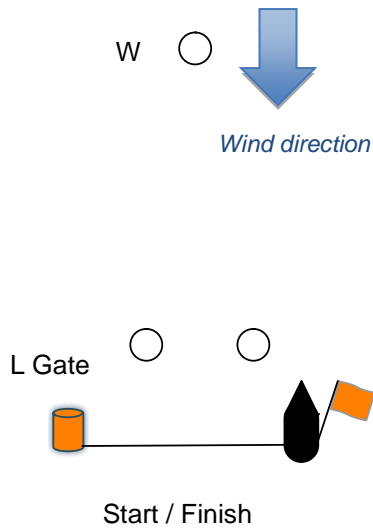


- 11.2 The OA, sponsors, New Zealand International O'pen BIC Class Association and the race committee are not responsible for any damage or injury either afloat or ashore.
- 11.3 **Risk Warning:** The OA advises competitors, legal guardians and anyone who participates in yachting events conducted by the OA that participation in the sport of yachting, whether racing or otherwise, can be dangerous and can result in harm, personal injury and property damage. The OA is not responsible for any harm or injury suffered by any person in any yachting event conducted by the OA of whatever nature. All participants (and their legal guardians) acknowledge that competing in yachting events may be dangerous and may result in harm or personal injury and participate in such events aware of such dangers and voluntarily accept any risk of harm.
12. **INSURANCE** Refer NoR 16
13. **SUPPORT VESSELS** Refer NoR 12



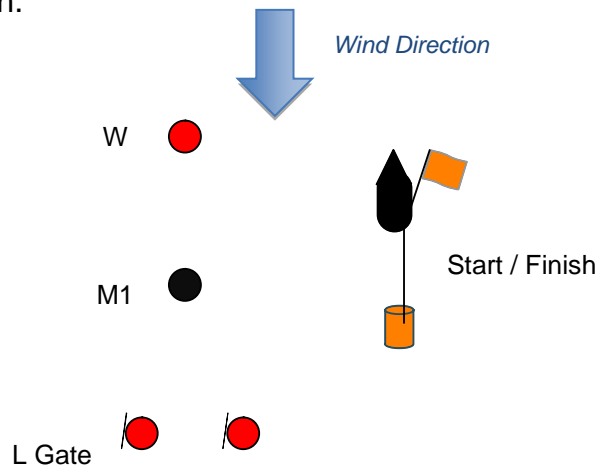
**Course 1 (Gold only):**

Start – W (port) – L Gate – W (port) – Finish

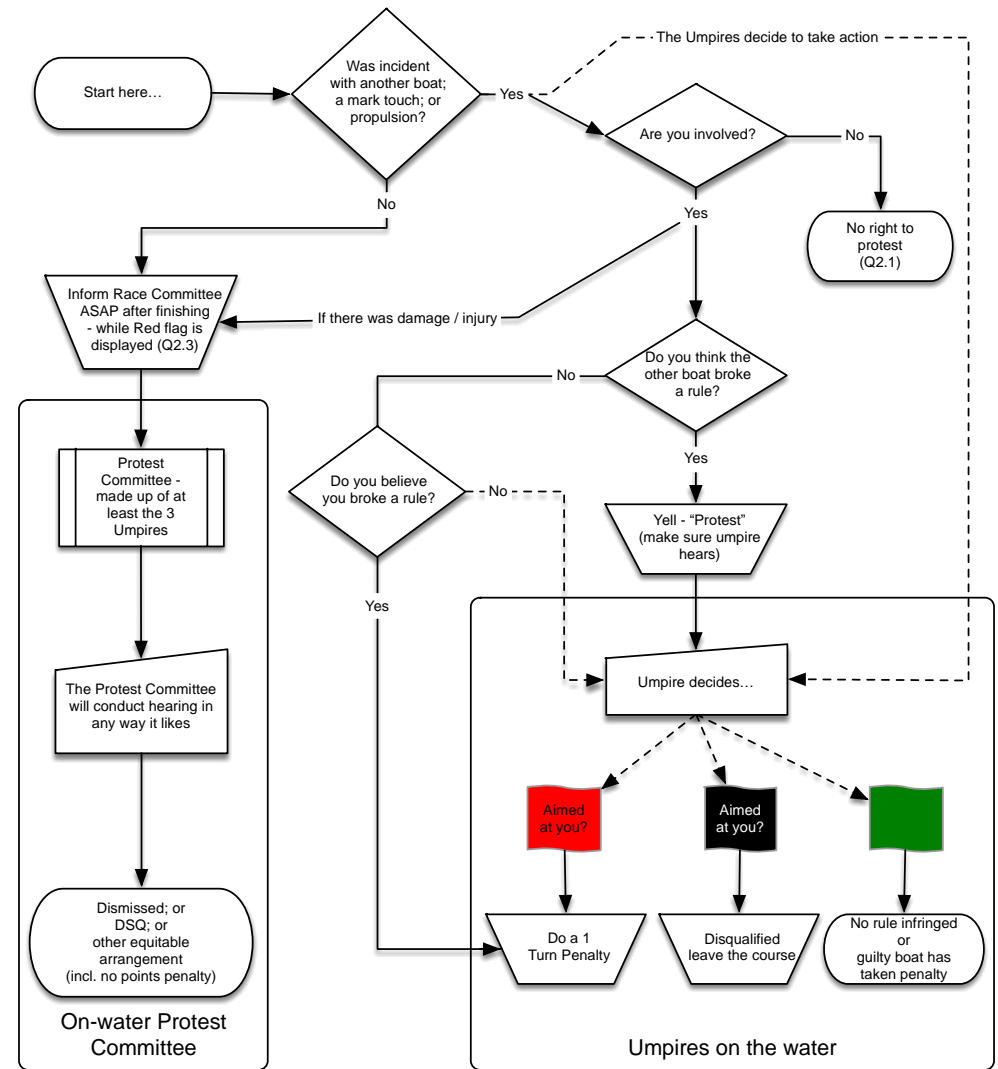


**Course 2 (gold only):**

Start - M1(port) - L Gate – W (port) - L Gate – W (port) - M1(port) – Finish.

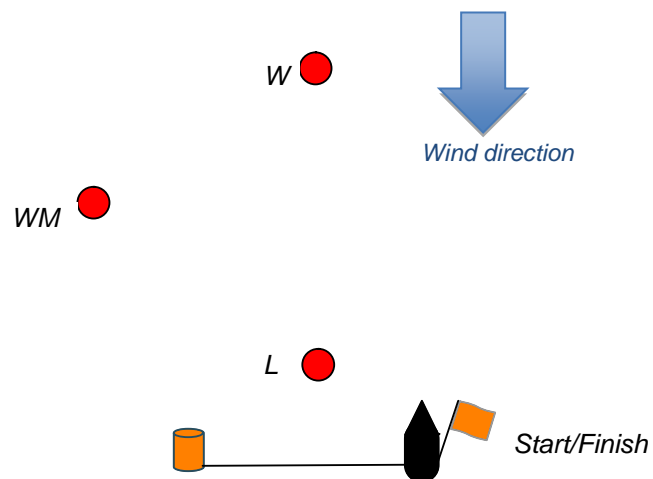


O'pen BIC Addendum Q Flowchart



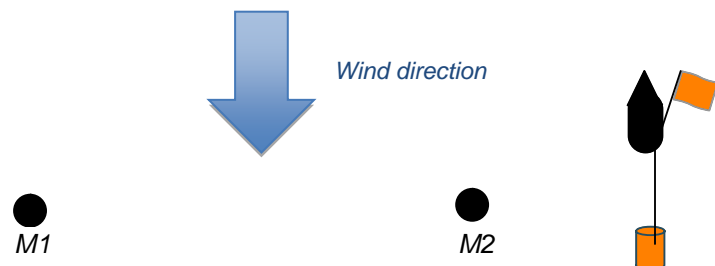
### Course 3 (Gold and Silver):

Start - W (port) – WM (port) – L (port) – W (port) – WM (port) – Finish



### Course 4 (Silver only):

Start – M1 (starboard) – M2 (port) – M1 (starboard) - Finish



Two courses may be run (Gold and Silver) using the same marks, providing the start times are separate for each fleet. If the conditions are deemed unsafe for Silver fleet to race in the Gold fleet sailing area, or vice-versa, then two separate courses may be laid in different areas. This decision is to be made by the organising authorities and race committee and will be explained at the daily briefing.